

Setting up a GPRS Connection

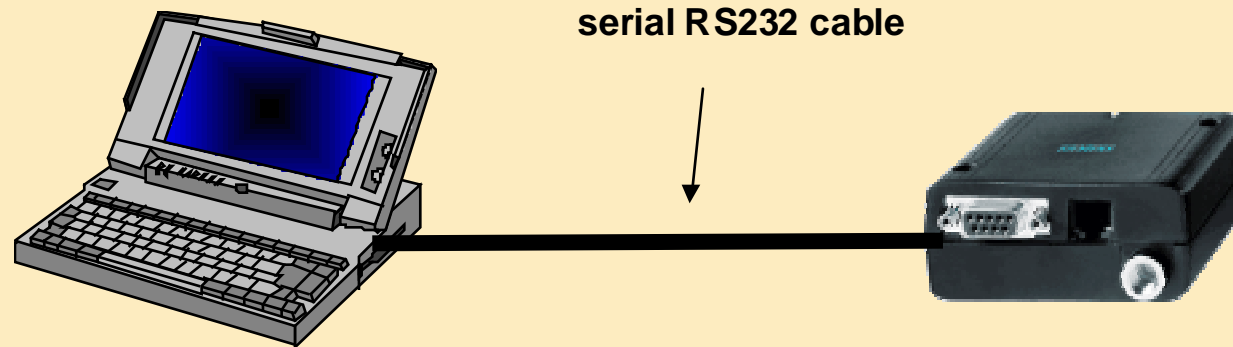


Steps within the OS Windows 98

- 1. Connecting hardware**
- 2. Installing a new modem (here: MC35)**
- 3. Configure Remote Access Service**
- 4. Setting up the Dial-up Network**
- 5. Log into the Net**
- 6. Troubleshooting**



Connecting Hardware



PC with Windows NT 4.0 SP6a

free RS232 port

log in with administrator rights

Windows NT Installation CD is
maybe used

MC35 Terminal

insert SIM

connect antenna

connect power supply

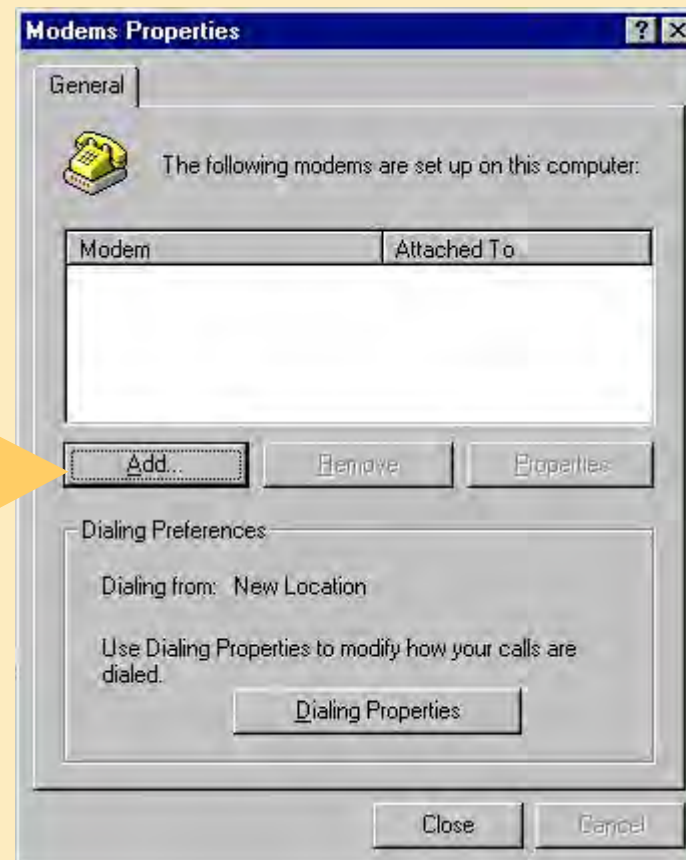
optional connect handset



Installing a new modem

- Open control panel
- Click „Modems“

Add new modem

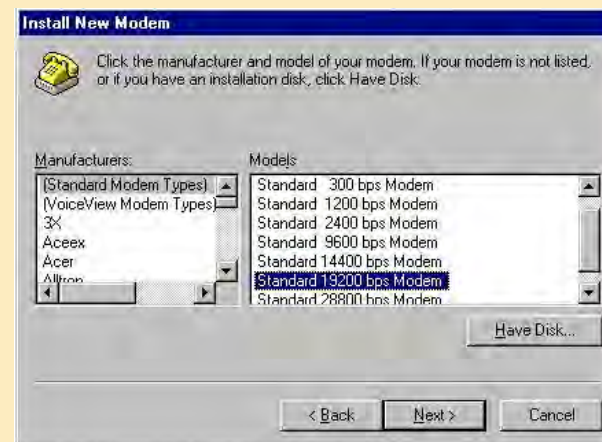


Installing a new modem

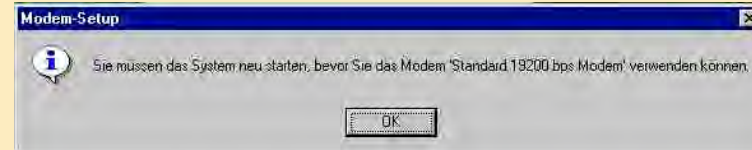
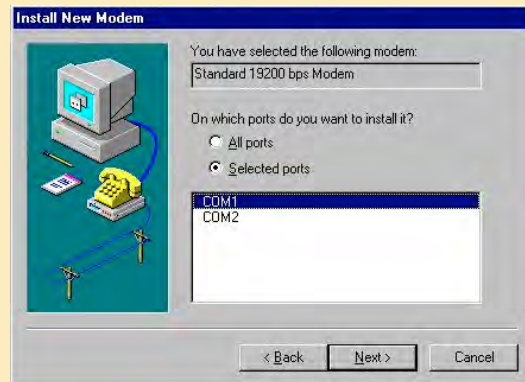
- Click :“Don't detect my modem, I'll select it“



- Choose Standard modem 19200bps



Installing a new modem

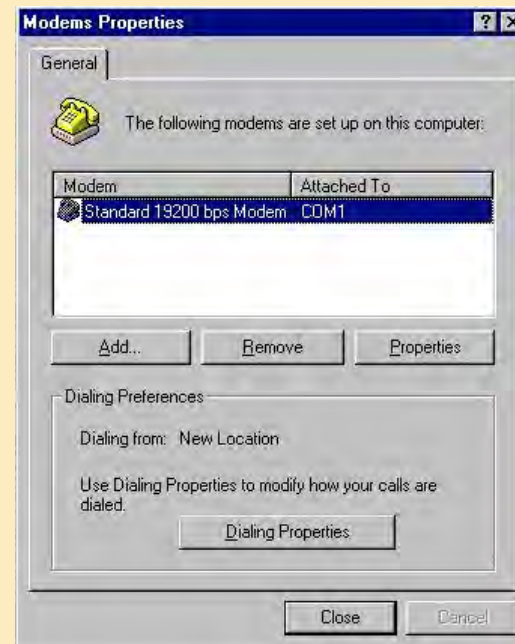


- Choose COM Port
- Click „finish“ in the next window
- Restart, if recommended
- Close all windows and restart

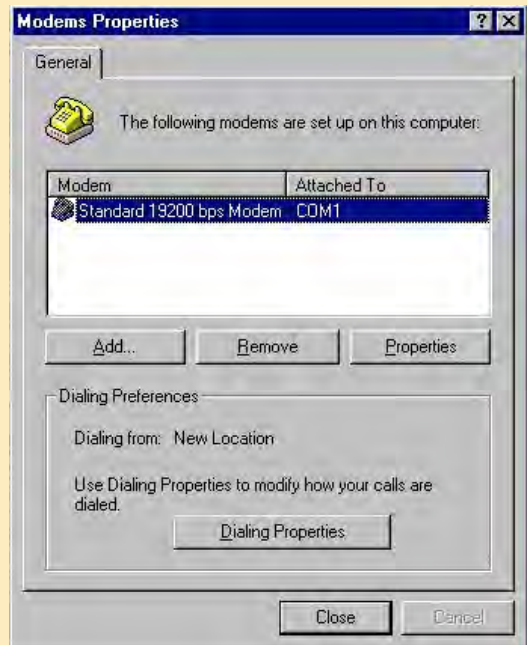


Installing a new modem

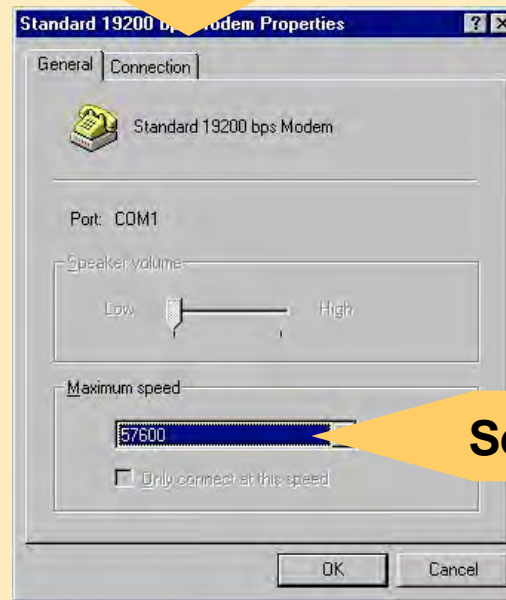
- Open „Control panel“
- Click „Modems“
- Now you see the installed modem in the list
- Mark „Standard 19200 bps modem“
- Click „Properties“



Installing a new modem



Click
„Connection“

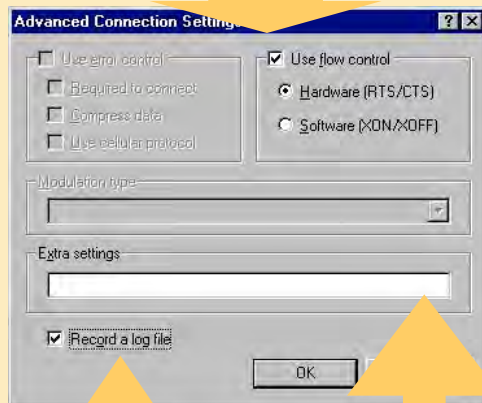


Select 57600 bps



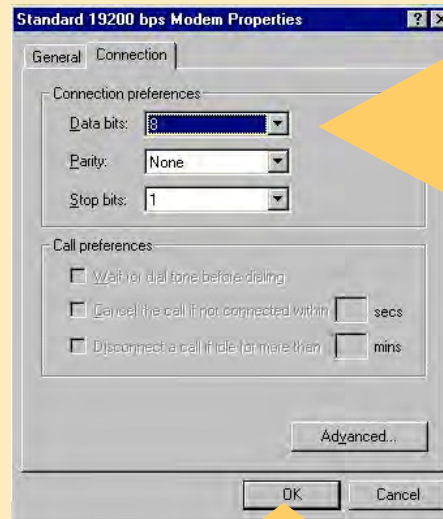
Installing a new modem

activate
„Hardware flow control“



activate *
optionally

Instead of
activating
terminal window,
type in at -
commands
here **



Data bits: 8
Parity: Keine
Stop bits: 1

Close all
windows with
„OK“!

click
„Advanced“

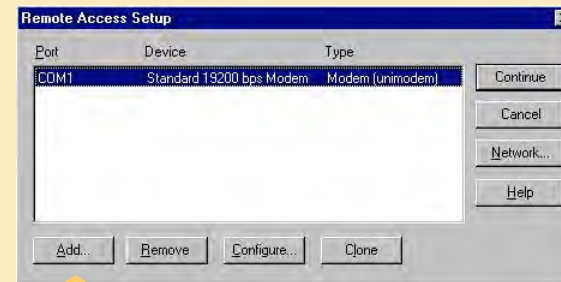
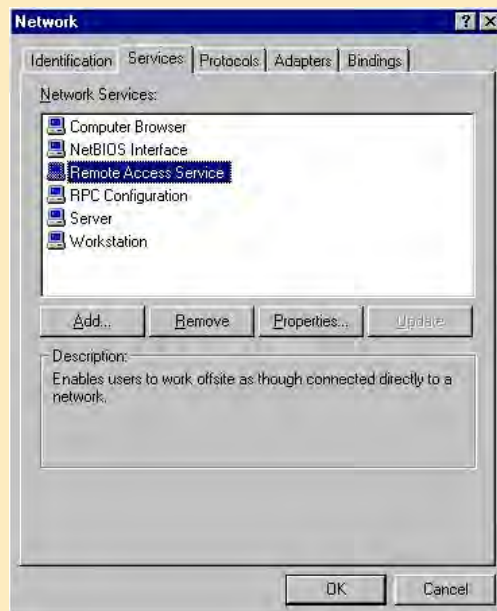
* therewith a *.log file is created in the
ROOT-folder e.g. C:\WINNT\

**at!q3+cgdcont=1,ip,volume.d2gprs.de



Configure Remote Access Service

- Open control panel
- Click „Network“
- Choose „Services“ in register
- Choose „Remote Access Service“

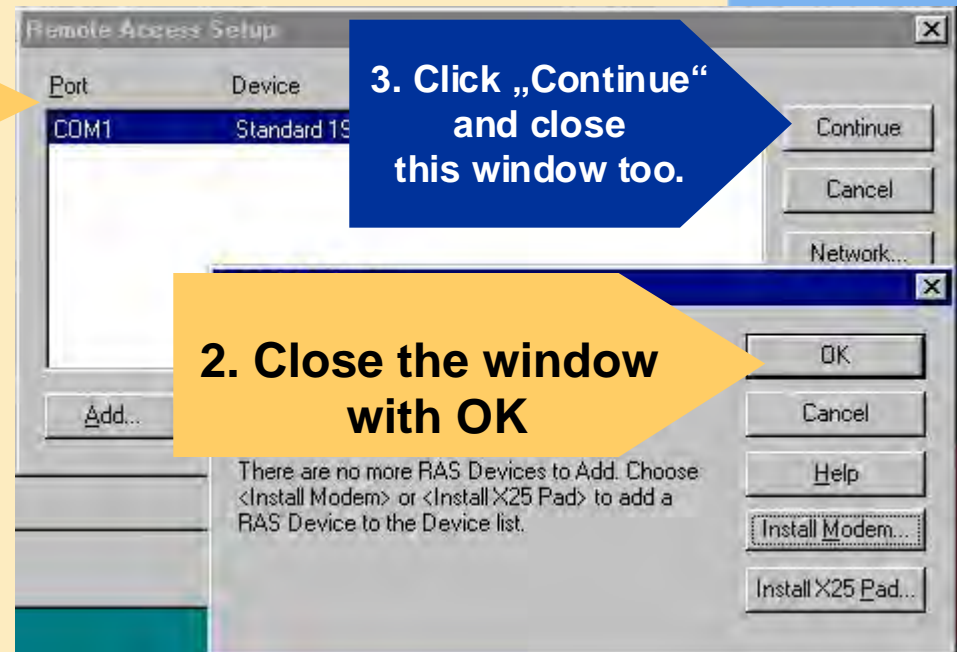


click
„Add“



Configure Remote Access Service

1. Select the installed modem here

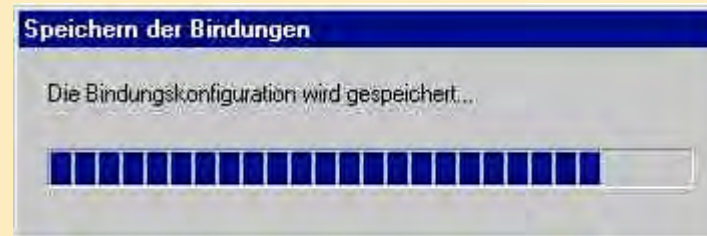


2. Close the window with OK

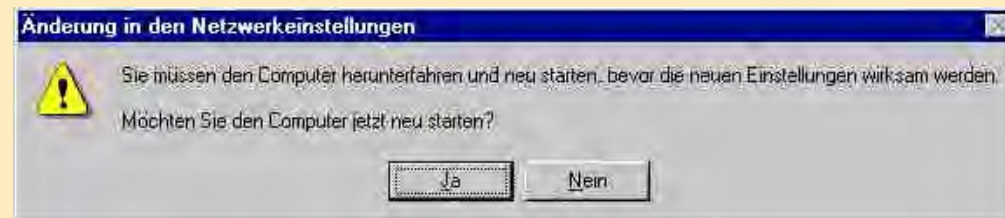
3. Click „Continue“ and close this window too.

Configure Remote Access Service

The connection to the Network is set up automatically. e.g. to the required TCP/IP protocol



Click „Yes“ and restart



Setting up the dial-up network

You need some data from your provider:

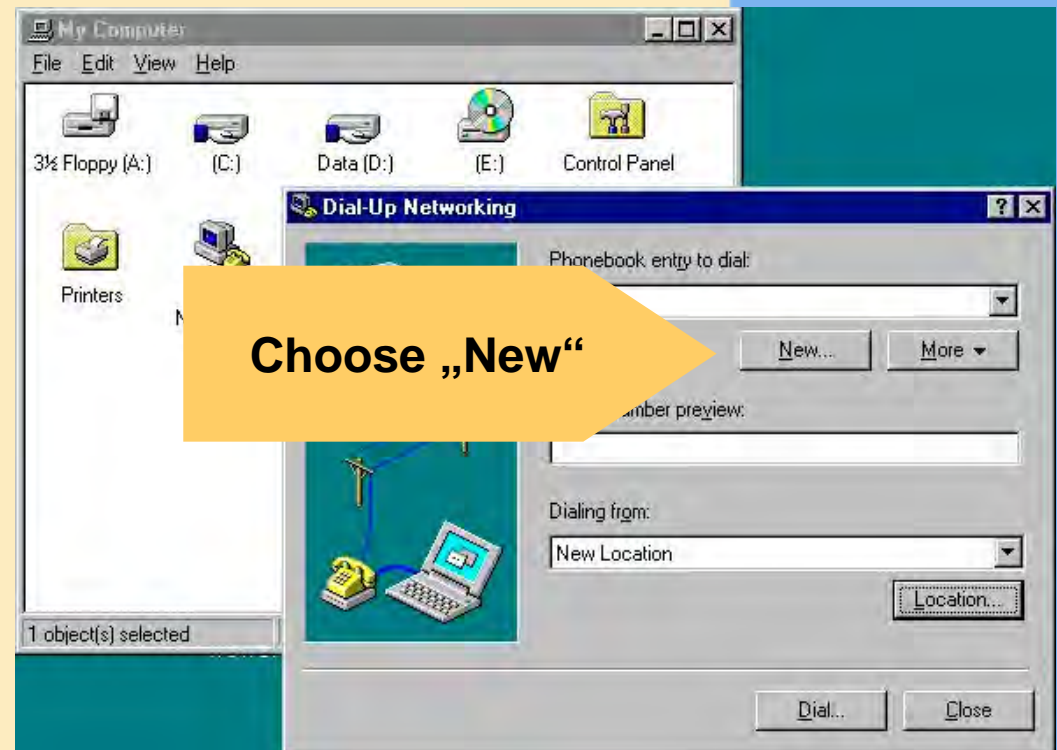
	T-D1	D2 Vodafone	E-Plus	VIAG
Primary DNS	193.254.160.1	139.7.30.125	212.23.97.2	195.182.96.28
Secondary DNS	free	139.7.30.126	212.23.97.3	195.182.96.61
IP address	Automatic	Automatic	Automatic	Automatic
APN	internet.t-d1.de	volume.d2gprs.de	internet.eplus.de	internet
IP header compression	no	no	no	no
Default QoS	Precedence 3; delay 4; reliability 3; peak 0; mean 0	Precedence 3; delay 4; reliability 3; peak 7; mean 31	Precedence 2; delay 4; reliability 3; peak 9; mean 31	Precedence 2; delay 4; reliability 3; peak 4; mean 31

- APN (Access Point Name)
- DNS (Domain Name Server)
- Default QoS (Quality of Service) settings
- IP-Header
- IP addressing (dynamic oder static)
- Username und password (if recommended)



Setting up the dial-up network

- open „my computer“
- click „dial-up network“



Setting up the dial-up network

entry your name

choose „Server“

choose „Standard 19200 bps Modem“

Click „Configure“

insert
Phonenumber:
*99#
oder
*99***1#
no dialing
properties

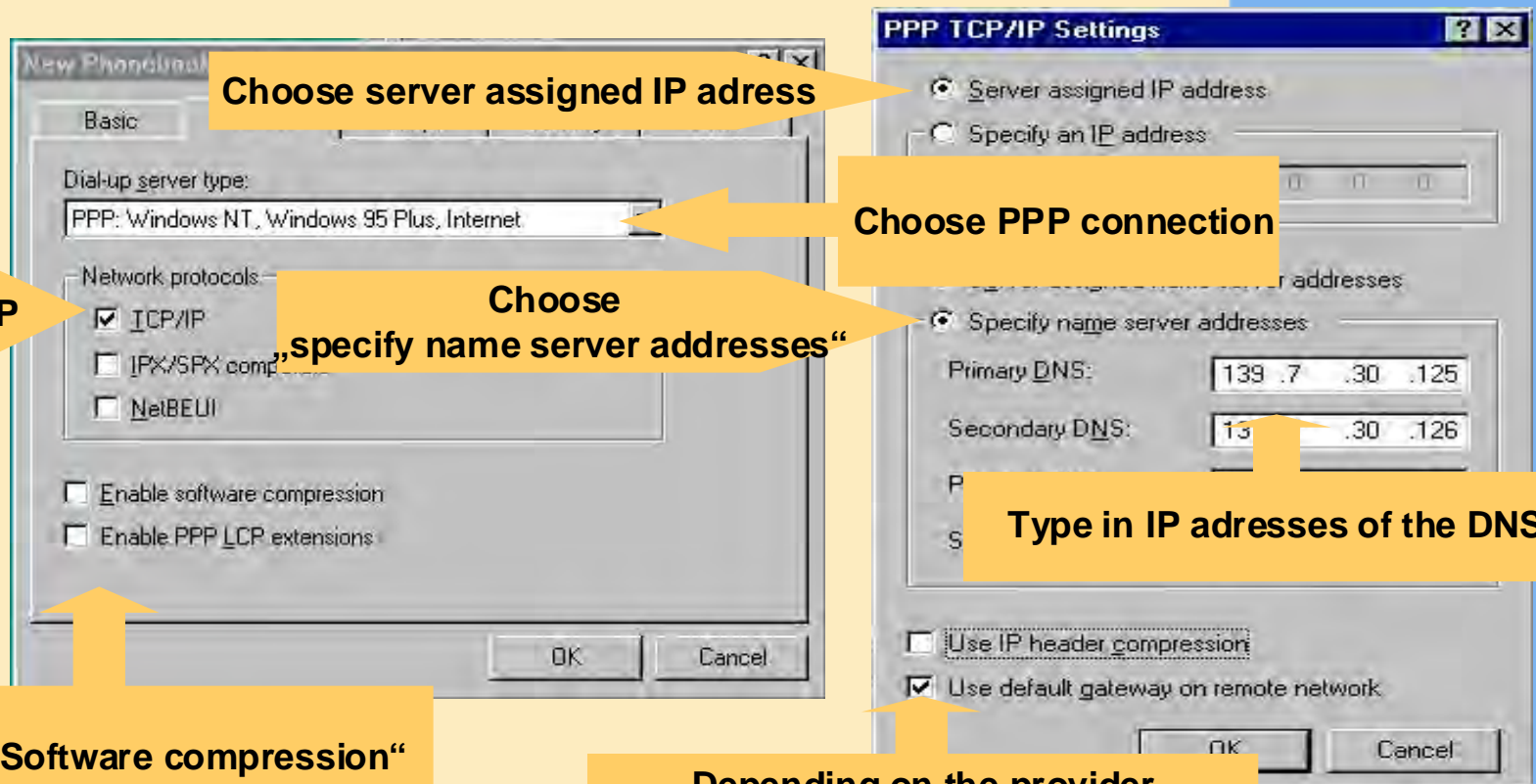
enable „Hardware“

Set to 57600 bps

Close with „OK“

The image shows two screenshots from a Windows operating system. The top screenshot is a dialog box titled 'New Phonebook Entry' with tabs for 'Basic', 'Server', 'Script', and 'Security'. The 'Server' tab is selected. It contains a text field for a name, a dropdown menu for a modem (set to 'Standard 19200 bps Modem (COM1)'), and a checked checkbox 'Use another port if busy'. The bottom screenshot is a 'Modem Configuration' dialog box for the 'Standard 19200 bps Modem (COM1)'. It shows 'Initial speed (bps)' set to 57600. Under 'Hardware Features', 'Enable hardware flow control' is checked, while 'Enable modem error control' and 'Enable modem compression' are unchecked. 'Disable modem speaker' is also checked. An 'OK' button is at the bottom.

Setting up the dial-up network



Choose server assigned IP address

Choose PPP connection

Select TCP/IP

Choose "specify name server addresses"

Type in IP addresses of the DNS

Deactivate „Software compression“ deactivate „LCP extensions“

Depending on the provider activate IP header compression

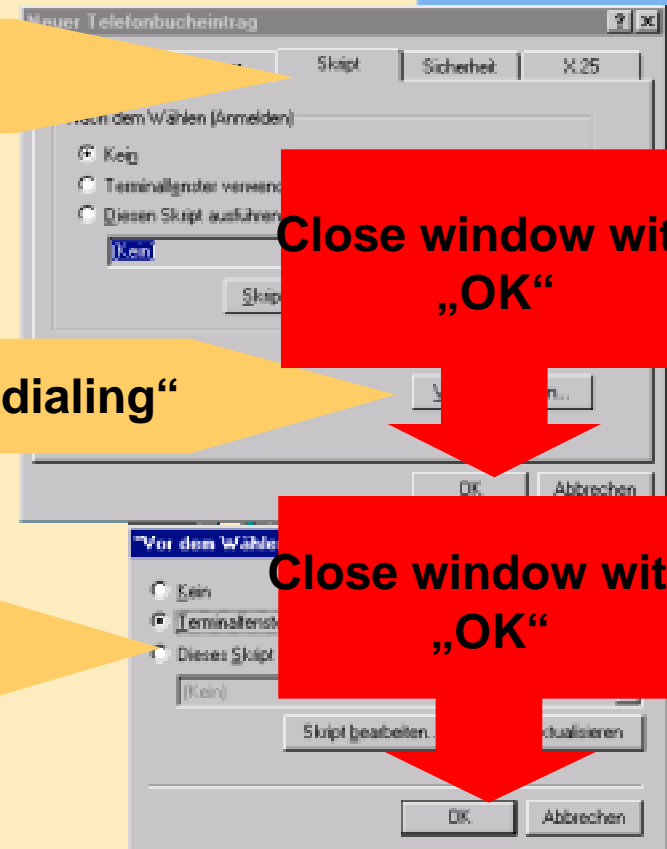
Close Window

Setting up the dial-up network

Choose register „Script“

Click „before dialing“

Activate „Pop up a terminal window“,
only if you didn't fill in „extra settings“



Log into the Net

- Open „My computer“
- Click „Dial-up network“



Log into the Net

Type in name and password
optionally activate „save password“

Connect to D2Vodafone

Enter a user name and password with access to the remote network domain.

User name: Siemens

Password: xxxxx

Domain:

Save password

OK Cancel

Click „OK“ and start dialling



Log into the Net

If chosen, the terminal window pops up now.

Therewith you have the following choises

- enter the pin
- check the status of the network
- all kinds of at-commands are possible



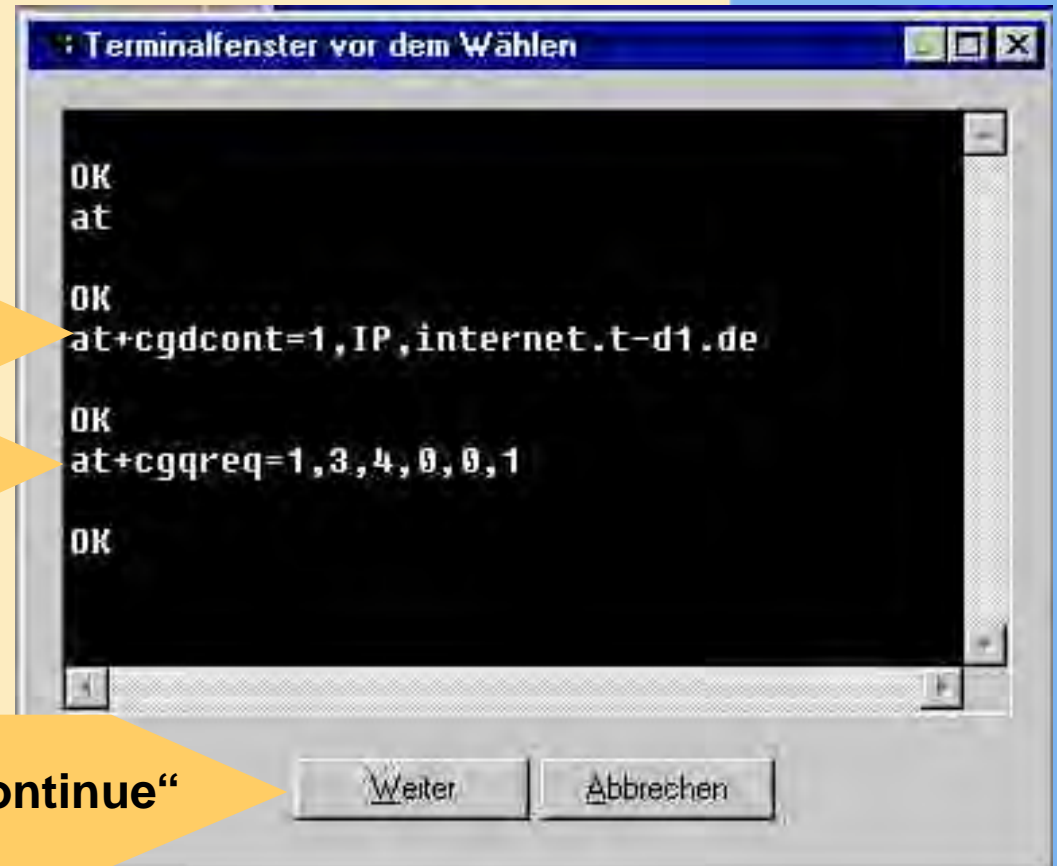
Log into the Net

Beispiel

PDP Context für „T-D1“

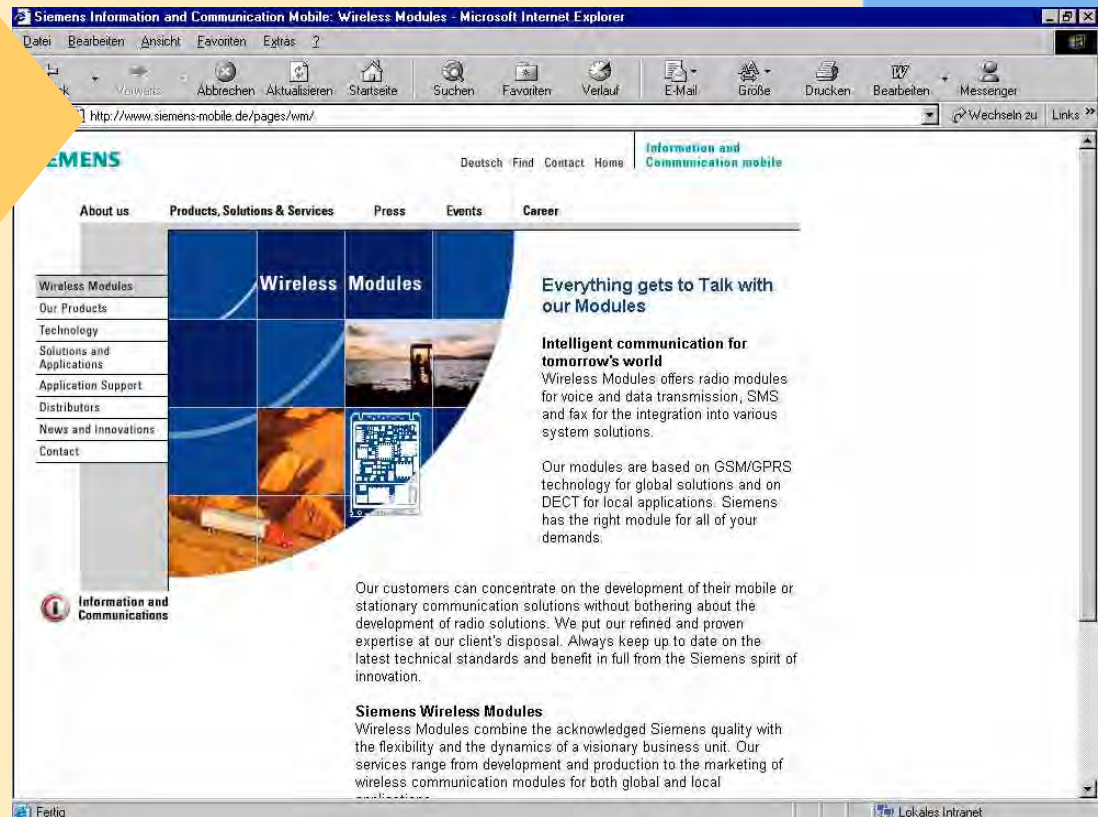
Requested Quality of Service

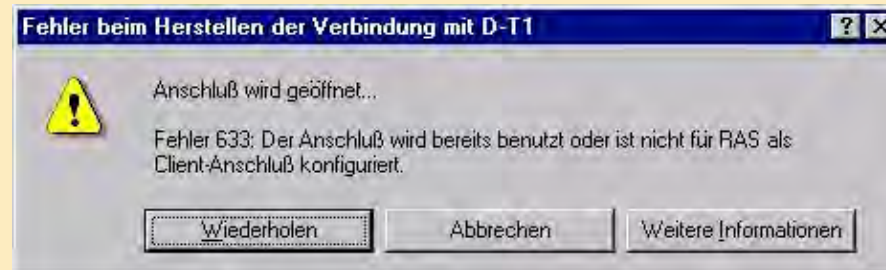
Proceed with „Continue“



Log into the Net

The MC 35 is now connected via GPRS with a browser you can surf in the Internet now.





- An other program blocks the serial interface, e.g. mouse sw or PDA sw
- An other application (fax-, terminalprogram) uses the modem
- RAS is only set up for incoming calls





The dial-up window pops up for a short time and disappears without any error messages

The initialization did not work! Possible reasons:

- the lokal baudrates do not match together (AT+IPR)
- some extra settings had been made and cause a failure
- the MC 35 has no physical contact to the com port



- **Check all plug connections**
- **Check control-LED of Terminal/DSB35**
- **Close all programs which use the serial interface**
- **Check communication to the MC35 with terminal program (hyper terminal)**
- **Check the modem installation (baudrate in modem and dial-up network)**
- **Configure and check RAS**
- **Check „extra settings“ and remove it for testing**
- **Read log-file for trouble - shooting**

End